

Safety & Operating Instruction Sheet

NOPEUS[™] **MWT-NS1** ***INDUSTRIAL PROFILE*** ***SHEAR***

INCLUDES:

- **Double insulated 120 volt drill**
- **Straight/Left cutting head**



1210 Progress Street • PO Box 160 • Sturgis, Michigan 49091

(800)782-4659

www.MidWestSnips.com

Please Read and Save Safety & Operating Instructions.

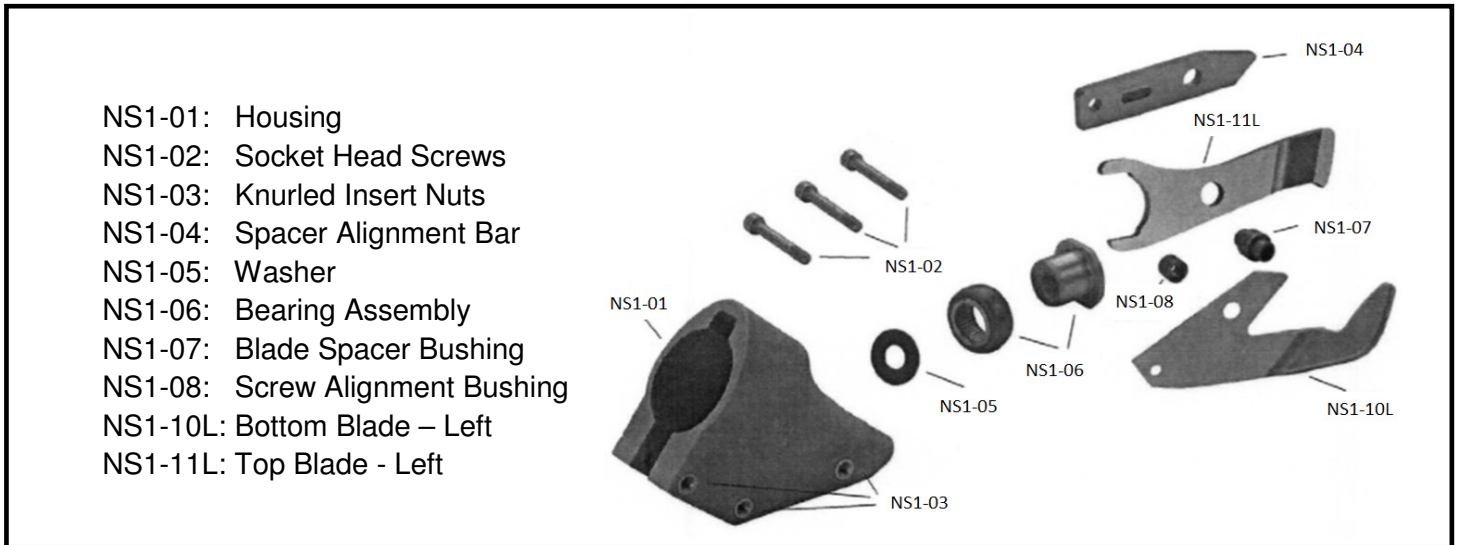
WARNING: Do not use cutting head with any other drill. Midwest Tool & Cutlery Co. can not assume responsibility for damage or malfunction of the cutting head if used in combination with any other drill other than the Midwest Tool Drill supplied.

Safety & Operating Instructions:

- Recommended for CR sheet steel up to 18 gauge.
- Always wear proper hand, ear, & eye protection.
- Do not wear loose clothing or jewelry.
- Maintain a stable stance and balance. Do not overreach.
- Keep work area free of clutter and debris.
- Make sure work area is properly illuminated.
- Do not use tool in damp or wet environment.
- Secure work piece(s).
- To start cut, place material between the blades.
- Depress trigger switch and guide blades into material. (Do not force it.)
- Avoid stacked material which can exceed the 18 gauge recommended cutting capacity.
- For cutting within perimeter of work piece, drill a $\frac{3}{4}$ " (20mm) diameter starting hole and follow above instructions.
- If cutting becomes difficult or develops a resistance to cutting, discontinue cutting and check the thickness of the material, sharpness of the cutting blades, alignment of moving parts, breakage, lubrication, or other conditions that may affect its operation. Before further use of tool, carefully check to determine it will operate properly and safely.
- Do not operate in explosive atmospheres such as in the presence of flammable liquids, gases, or dust.
- The power supply must agree with nameplate marking. Use Alternating Current Only (50 to 60 Cycles), 120 volts. Voltage variation of more than 10% will cause loss of power and overheating. Motors are factory tested. If this shear does not operate, check the following: supply line for blown fuses; plug and receptacle for contact. This tool will stop when the brushes wear to a preset length. Damage to the motor is thus avoided.
- Do not carry the tool while plugged-in to avoid accidental starts.
- Do not carry, lift or yank tool to it to disconnect from receptacle by power cord.
- If an extension cord is required, a cord of adequate wire gauge must be used to prevent loss of power and overheating. Extension cord up to 75 feet (23 meters) use number 18 wire gauge; for 100 feet (30.5 meters) use number 16 wire gauge; and up to 200 feet (61 meters) use number 14 wire gauge.
- Avoid dragging power cord across sharp surfaces, heat and oil. If power cord is cut or appears damaged, do not use.
- When not in use, tools should be stored in dry, high or locked-up place out of reach of children.
- Safety is a must! Use common sense when operating the tool. Do not use while tired or under the influence of drugs, alcohol or medication.
- The tool should only be used for which it is designed.

Maintenance:

- Keep the tool and power cord clean.
- Every three months or depending on usage, follow lubrication instructions below.
- When servicing make sure the tool is unplugged.
- Have an authorized representative replace carbon brushes and switches.
- When servicing, only use identical factory parts.



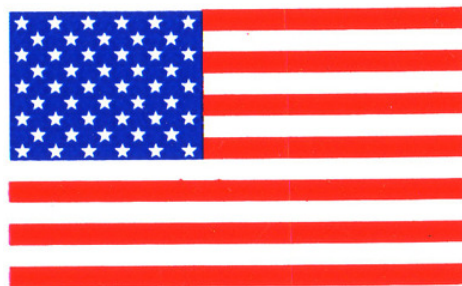
- NS1-01: Housing
- NS1-02: Socket Head Screws
- NS1-03: Knurled Insert Nuts
- NS1-04: Spacer Alignment Bar
- NS1-05: Washer
- NS1-06: Bearing Assembly
- NS1-07: Blade Spacer Bushing
- NS1-08: Screw Alignment Bushing
- NS1-10L: Bottom Blade – Left
- NS1-11L: Top Blade - Left

Lubrication Instructions:

1. Remove socket head screws (NS1-02), removing forward screw first, working rearward.
2. When removing rearward screw, be careful not to lose screw alignment busing (NS1-08).
3. Carefully slide forward the top (NS1-11L) and bottom (NS1-10L) blade along with spacer alignment bar (NS1-04), making sure not to lose blade spacer bushing (NS1-07).
4. Lubricate bearing assembly (NS1-06) and fulcrum of blades, with Molybdenum Disulfide grease or equivalent.
5. To assemble, align bottom blade (NS1-10L) and top blade (NS1-11L) with blade spacer bushing (NS1-07).
6. Place spacer alignment bar (NS1-04) parallel with top blade (NS1-11L) until blade assembly is aligned.
7. Slide blade assembly rearward into the housing (NS1-01) until aligned.
8. First install the forward socket head screw (NS1-02), middle screw, and when installing rearward screw, make sure to insert screw alignment bushing (NS1-08).



Midwest Tool & Cutlery Company
120 Progress Street – PO Box 160
Sturgis, MI 49091
(800)782-4659
www.MidWestSnips.com



Made in U.S.A.

Limited One Year Warranty

1. Midwest Tool & Cutlery Company warrants that MWT-NS1 shall be free from defects in material and workmanship for one (1) year from the date of delivery. This LIMITED WARRANTY does NOT apply where there has been a failure of the goods due to improper use; breakage not due to defect; failure on account of faulty or improper installation or handling; or failure on account of reading the **Safety & Operating Instruction Sheet**; or registering tool within ten days of purchase. This exclusion applies to original and replacement goods. Sales representative of MWT-NS1 are not authorized to make warranties about the tool. Sales representatives' ORAL STATEMENTS DO NOT CONSTITUTE WARRANTIES, shall not be relied upon by Buyer, and are not part of the contract for sale.
2. If Buyer believes it has purchased defective tool as described above, Buyer must notify Midwest Tool & Cutlery immediately as to why Buyer believes the tool is defective. Midwest Tool & Cutlery may then request the Buyer to return the allegedly defective tool to determine whether the tool is defective as described above. If the tool is proven to be defective as described above, then Midwest Tool & Cutlery will, at its sole discretion, either repair or replace the defective tool. Said repair or replacement of defective tool shall constitute fulfillment of all liabilities of Midwest Tool & Cutlery to Buyer with respect to, or arising out of, the goods, whether based on contract, negligence, and strict tort or otherwise. Midwest Tool & Cutlery reserves the right to change design, color, models, and to discontinue the manufacture of any goods.
3. LIMITATION OF LIABILITY. Midwest Tool & Cutlery shall not under any circumstances be liable for incidental damages or for special or consequential damages. The remedies of Buyer set forth herein are exclusive, and the liability of Midwest Tool & Cutlery with respect to any contract or anything done in connection therewith such as the performance or breach thereof, or from the manufacture, sales, delivery, resale, installation or use of any goods covered by or furnished under this agreement, whether arising out of contract, negligence, strict tort, or under any warranty or otherwise, shall not, except as expressly provided herein, exceed the price of the goods upon which such liability is based. This limitation of liability applies to original and replacement goods.
4. This warranty gives you specific rights. You may have other rights which vary from state to state.
5. For the above Limited Warranty to be valid, Buyer must register the tool within ten days of purchase date at www.midwestsnips.com/nopeus-registration

Register your *Nopeus* within 10 days.
Failure to register will void above warranty.